

How it Impacts Seniors?

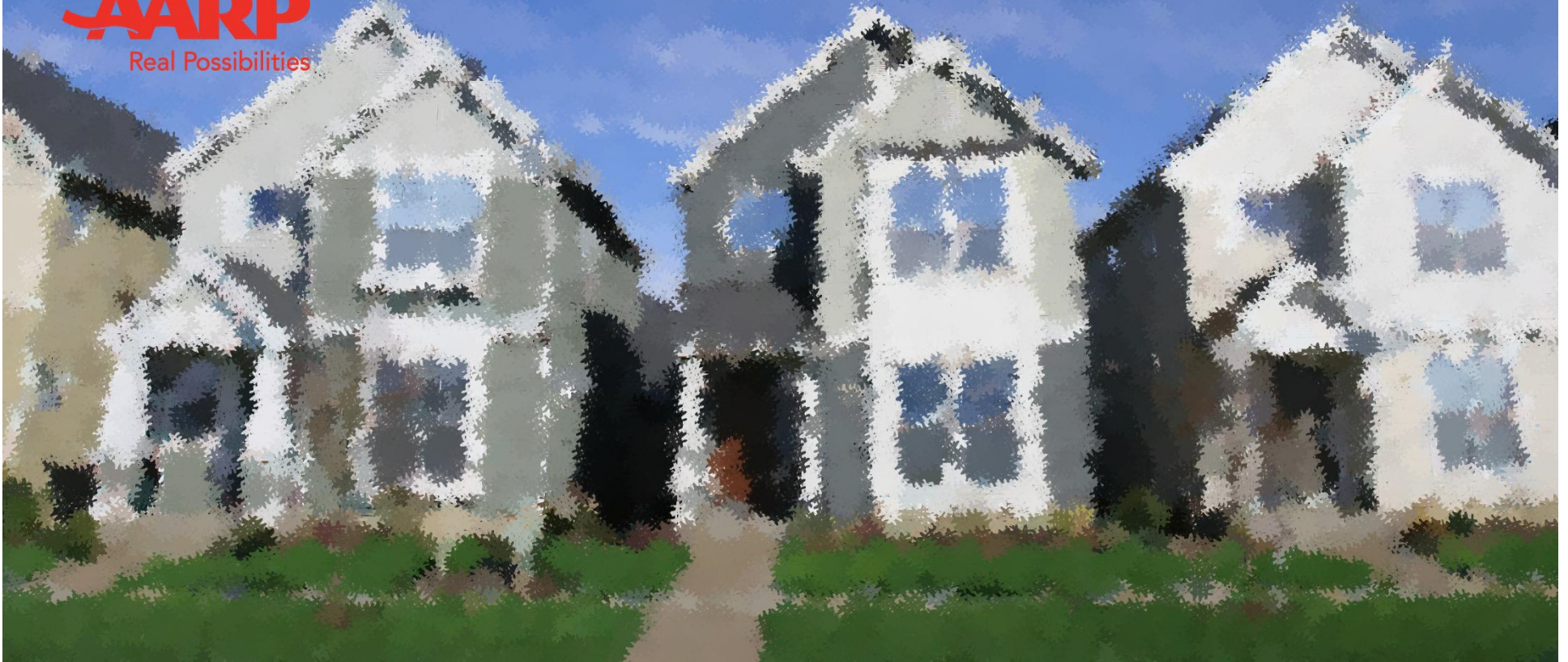
# **ALDEA DOUGLAS**

**AARP LIVABLE COMMUNITIES TEAM**



# AARP Livable Communities: Smart Growth for the Boomer population

Aldea C. Douglas



# Livable Communities

“Affordable and appropriate housing, supportive community services, and adequate mobility options, which facilitate personal independence and the engagement of residents in civic and social life.”





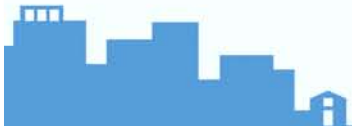
**1961**  
**White House Council on Aging**

# Boomers

Lead to growth in the 65+ population

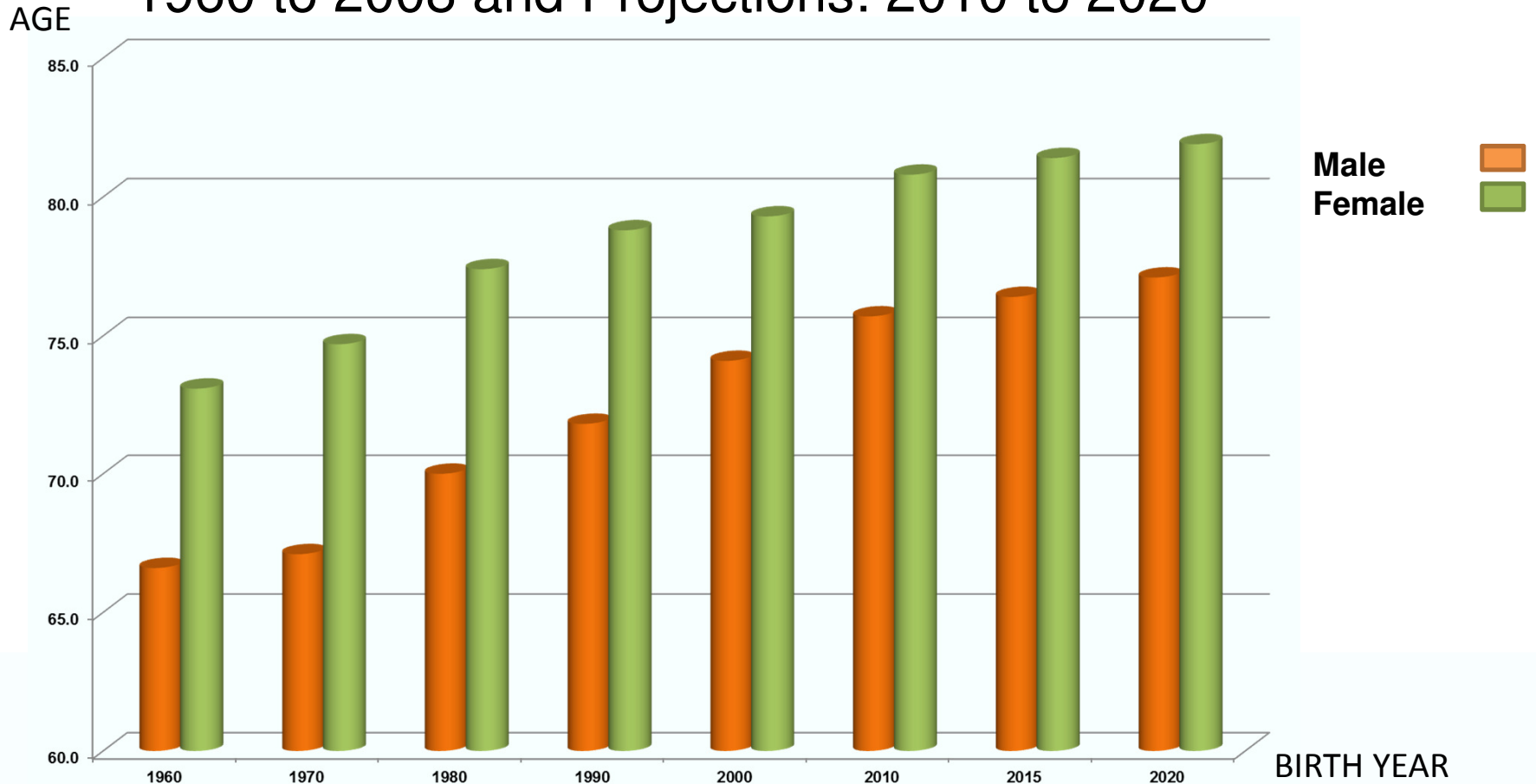
Year	65+ Population	Total Population	65+ Share of Total Population
2000	34,991,753	281,421,906	12%
2007	37,887,958	301,621,157	13%
2030	72,092,000	373,504,000	19%
2050	88,547,000	439,010,000	20%

Source: U.S Census Bureau - Census projections as of 8/2008



# Life Expectancy

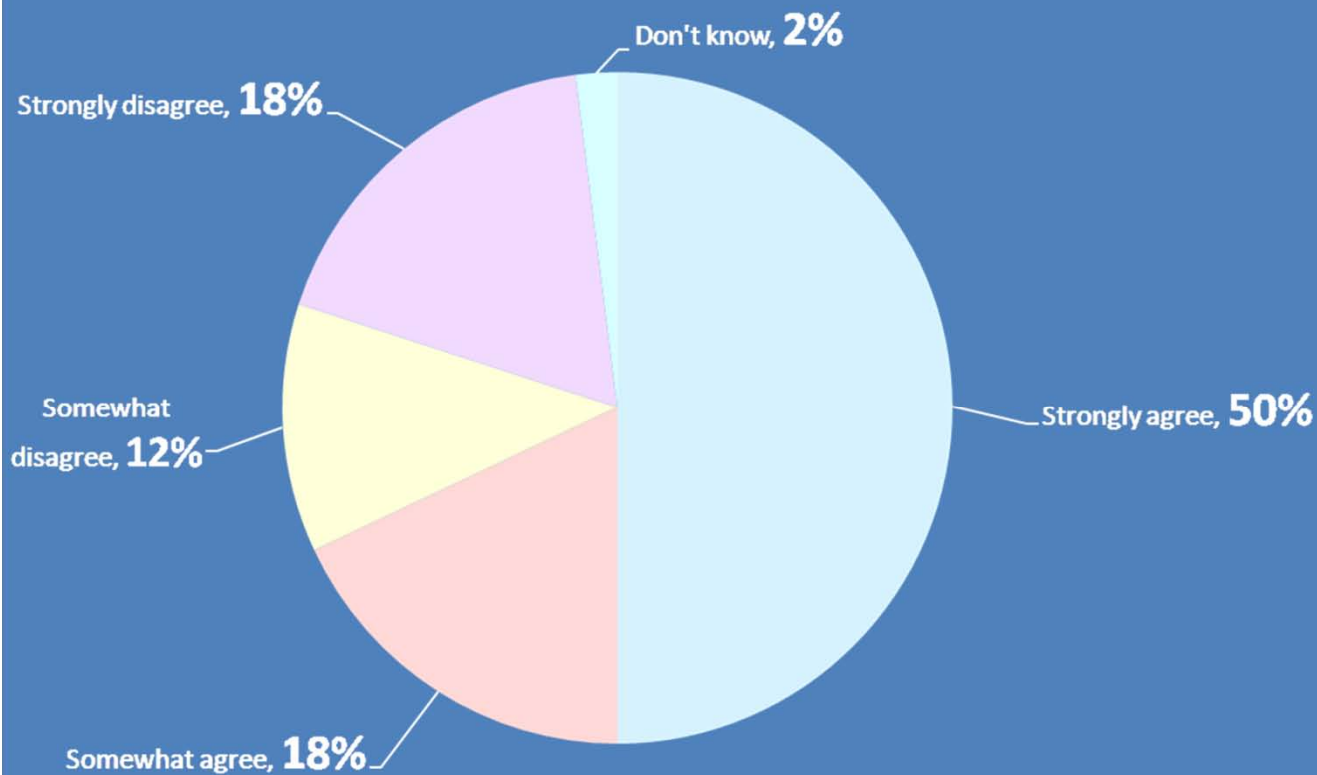
1960 to 2008 and Projections: 2010 to 2020





Trends

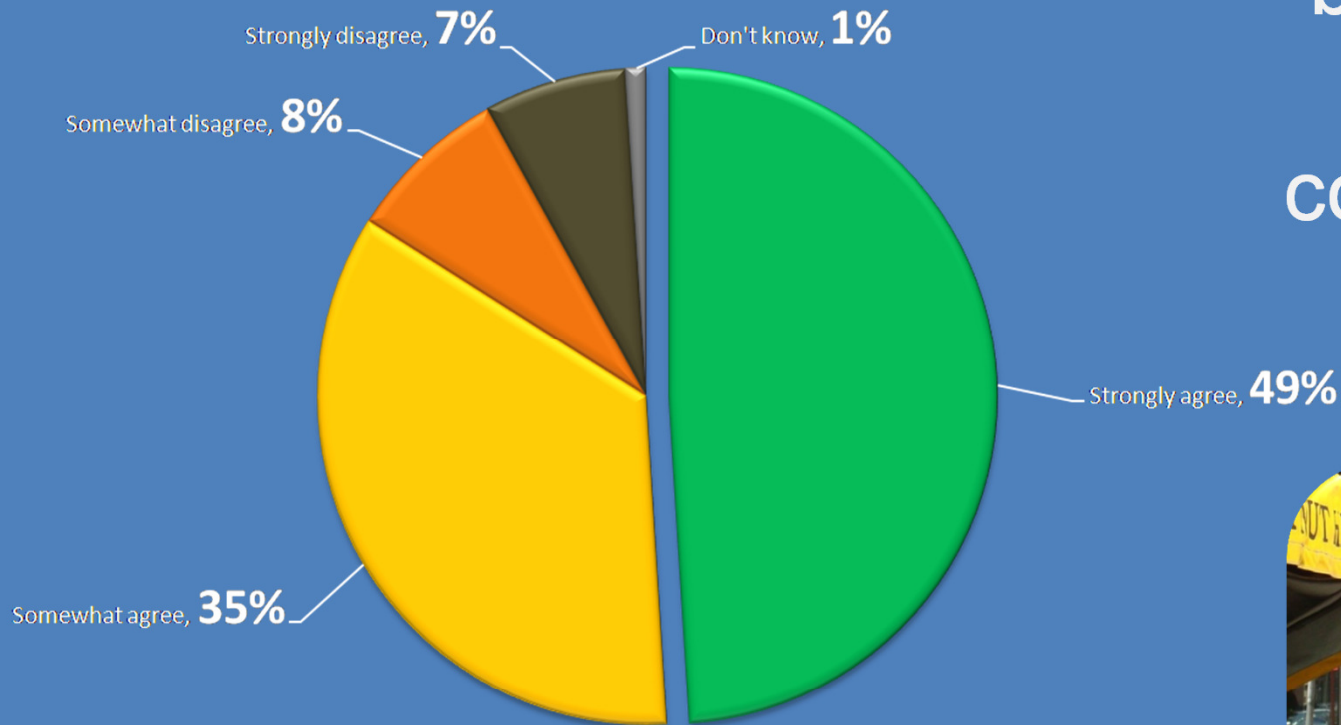
“What I’d really like to do is stay in my current residence throughout my retirement”



Source: AARP Housing Survey 2011

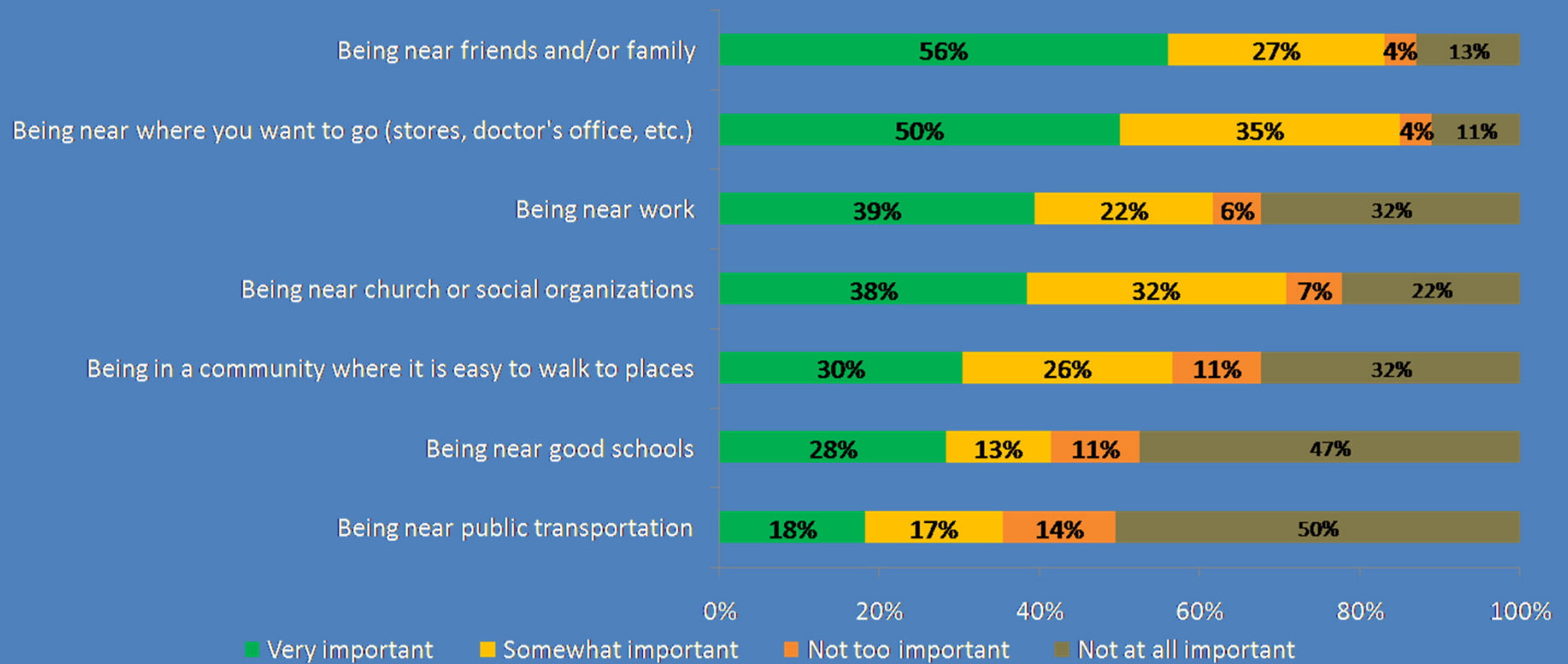


“I want to stay in my home because I like what my community has to offer me.”



Source: AARP Housing Survey 2011

# Reasons to Stay in Community





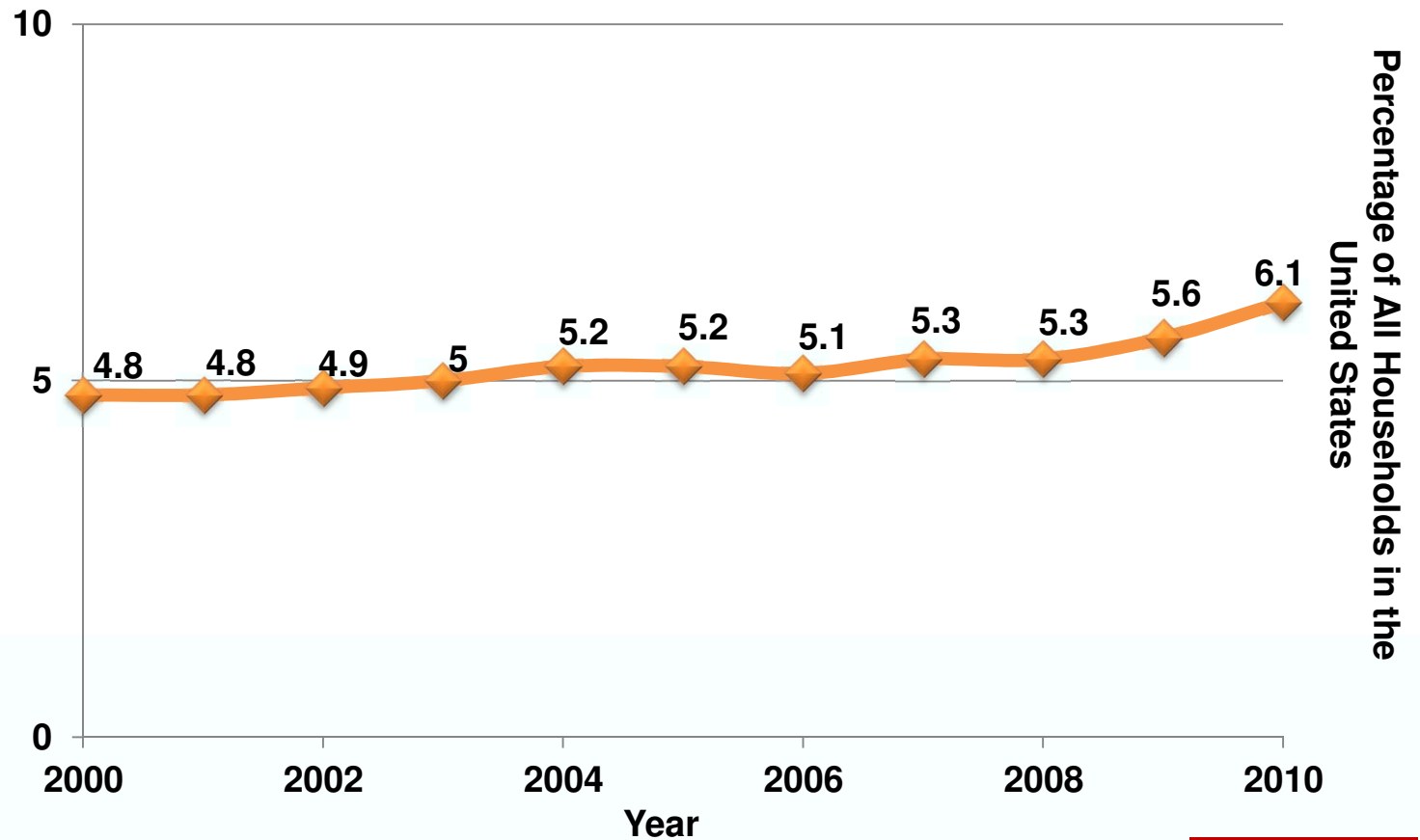


# Boomers and Millennials: Changing Preferences



# Multigenerational Households

Multigenerational Households as a Percentage of All Households in the United States, 2000-2010



Source: AARP Public Policy Institute analysis of Current Population Survey Data



# Thriving Cities



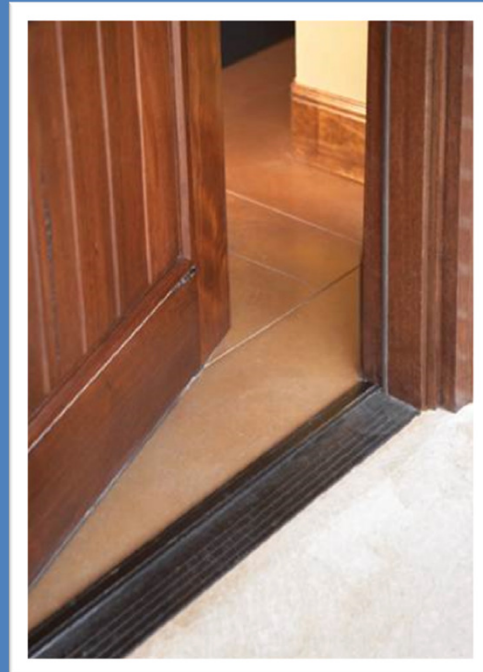
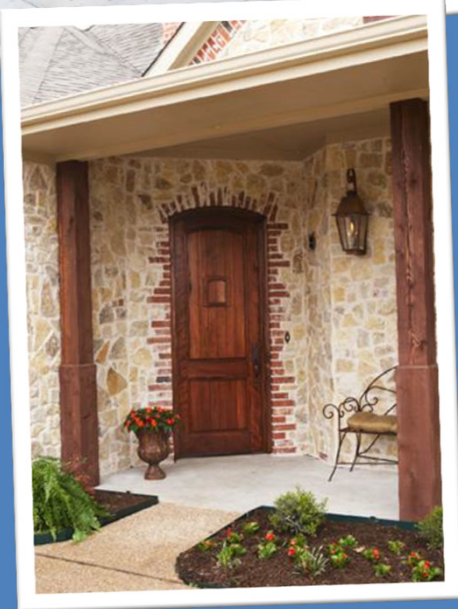
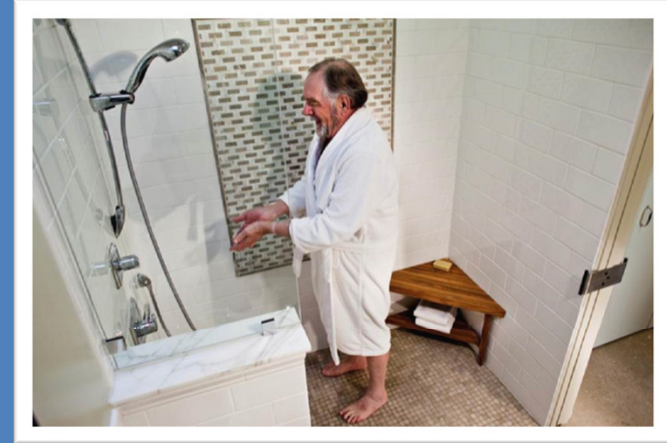
**AARP**<sup>®</sup>  
Real Possibilities





Better Communities for all!

# Universal Design





# Livable Communities



Instead of this...



**BUILD THIS!!!**



# Life-Long Communities

## Naturally Occurring Retirement Communities

- Accessory apartments
- Shared/co-housing
- Neighborhood services
  - Housing Options and Universal Design
  - Transportation Alternatives
  - Employment and Civic Engagement
  - Opportunities – Recreational/Social/Educational/Cultural



# Complete Streets



# Complete Streets



# Complete Streets



# Best Practices

- Life-Long Communities
- Variety of Housing Types
- Affordable Housing
- Complete Streets
- Universal Design/Adaptable Units



# AARP's Network of Age Friendly Communities

## Social Environment

Social Participation  
Communication and Information  
Civic participation and employment  
Respect and social inclusion  
Community support and health services



## Built Environment

Housing  
Transport  
Outdoor spaces & buildings



# AARP State Office Programs



**AARP**<sup>®</sup>  
Real Possibilities



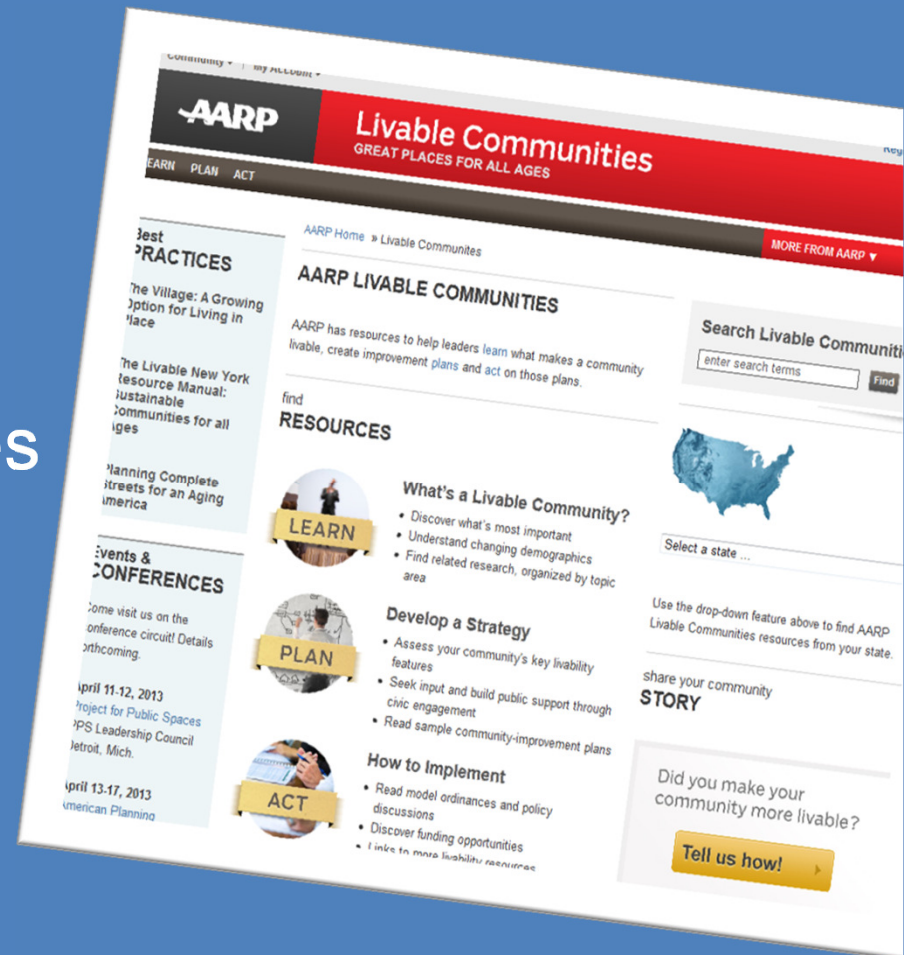
# Resources

[www.AARP.org/Livable](http://www.AARP.org/Livable)

[www.blog.aarp.org/greatplaces](http://www.blog.aarp.org/greatplaces)

Twitter:  
[@AldeaDC](https://twitter.com/AldeaDC)

[Adouglas@AARP.org](mailto:Adouglas@AARP.org)



**AARP**<sup>®</sup>  
Real Possibilities



Thank you!